



BY EMAIL ONLY

30 June, 2017

Mr. Donald C. K. Tong
Permanent Secretary for the Environment
Director of Environmental Protection
46/F, Revenue Tower,
5 Gloucester Road, Wanchai, Hong Kong.
(E-mail: donalcdcktong@enb.gov.hk)

Janice TSE, JP
Director of Home Affairs,
Home Affairs Department,
29/F, Southorn Centre, 130 Hennessy Road,
Wan Chai, Hong Kong
(Email: hadgen@had.gov.hk)

K W Lee Raymond, JP
Director of Planning
13/F, Sha Tin Government Offices
1 Sheung Wo Che Road, Sha Tin, N.T.
(E-mail: enquire@pland.gov.hk)

Mr Lam Sai-hung, JP
Director of Civil Engineering and Development
Civil Engineering and Development Building,
101 Princess Margaret Road, Kowloon
(E-mail: enquiry@cedd.gov.hk)

c.c

Mr. K. S. Wong
Secretary for the Environment
33-34/F & 46-48/F, Revenue Tower,
5 Gloucester Road, Hong Kong
(E-mail: enquiry@epd.gov.hk)

Mr. MA Siu-cheung, Eric
Secretary for Development
18/F, West Wing, Central Government Offices,
2 Tim Mei Avenue, Tamar, Hong Kong
(E-mail: plbenq@devb.gov.hk, wbenq@devb.gov.hk)

Ms. Bernadette LINN
Director of Lands
20/F, North Point Government Offices,
333 Java Road, North Point, Hong Kong.
(E-mail: landsd@landsd.gov.hk)

Dr. LEUNG Siu-fai
Director of Agriculture, Fisheries and Conservation
5/F Cheung Sha Wan Government Offices,
303 Cheung Sha Wan Road, Kowloon
(E-mail: mailbox@afcd.gov.hk)

Mr K H TONG, Edwin
Director of Drainage Services
43/F, Revenue Tower, 5 Gloucester Road, Wanchai,
Hong Kong
(E-mail: enquiry@dsd.gov.hk)

Dear Sirs/Madams,

Suspected Illegal Outfalls Spotted in “Conservation Area” and “OU(River Park)” Zone in Tung Chung River before Implementation of Tung Chung New Town Extension

Green Power would like to draw your attention to suspected illegal outfalls spotted along Tung Chung River which reveals the existing deficiencies to protect the “Excellent” water quality, and important but fragile ecology of Tung Chung River and Bay, which are Government’s major planning intentions for Tung Chung New Town Extension.

Green Power visited Tung Chung, Lantau in past few months and has spotted several suspected illegal outfalls which drain into Tung Chung River. Please refer to the attached **Map 1**.

Outfall 1: located beside the vehicular bridge in Shek Mun Kap Road which seems to link to stormwater drains of Shek Mun Kap Village. Please refer to **Map 2** and **Photo 1 & 2**.

Outfall 2: located beside an illegal bridge in Shek Lau Po which links to a suspected illegal open storage. Please refer to **Map 3** and **Photo 3 & 4**.

Outfall 3: located on western bank of channelized section of Tung Chung River, opposite the school, which links to a suspected illegal structure made with a container. Please refer to **Map 4** and **Photo 5 & 6**.

According to Tung Chung Valley Outline Zoning Plan, the complaint outfalls are located in “Conservation Area” and “OU(River Park)” zone which act as buffer zones to protect ecologically important Tung Chung River from pollution and any developments.

Green Power is gravely concerned about the adverse impacts imposed by these outfalls and more importantly its implications for the future development of Tung Chung River Valley. We are grateful for responses of relevant bureaus, departments and/or government authorities for the following questions:

1. The suspected illegal outfalls have been discharging wastewater to Tung Chung River which is an Ecologically Important Stream designated by the Government and inhabits various rare and important species. Have the water quality and aquatic species been affected by the suspected illegal outfalls?
2. Is it legal to lay down outfalls in “Conservation Area” and “OU(River Park)” zone in Tung Chung Outline Zoning Plan? If not, then when and what actions will be taken to remedy the case?

3. Do the complaint outfalls located in government or private lands?
4. According to the EIA report of Tung Chung New Town Extension, a Sustainable Urban Drainage System (SUDS) will be constructed in Tung Chung River Valley for stormwater treatment. Then, will the suspected illegal outfalls jeopardize the functions of SUDS?
5. Does construction of outfalls in Tung Chung Valley require official approval from relevant department(s), i.e. Environmental Protection Department, Home Affairs Department, Lands Department, Drainage Services Department, etc.
6. Also, how can the Administration prevent and remove the illegal outfalls in Tung Chung River Valley and Bay?

Green Power appreciates the intention and efforts of the Administration taken to protect Tung Chung River and Bay through publishing a Development Permission Area plan and the following Outline Zoning Plan for Tung Chung River Valley, and planning to build SUDS. However, the lands adjoining Tung Chung River and its river water quality have been damaged and threatened over a decade by proliferating incompatible developments and the associated wastewater and stormwater discharge. The situation is worsening in a fast pace.

We hope that the Administration investigates this complaint seriously and takes prompt actions to stop, rectify and prevent any environmental, hydrological and ecological damages.

For any inquiries, please contact the undersigned at Green Power (T: 3961 0200, F: 2314 2661, Email: lkcheng@greenpower.org.hk).

We look forward to your reply and actions as soon as possible.

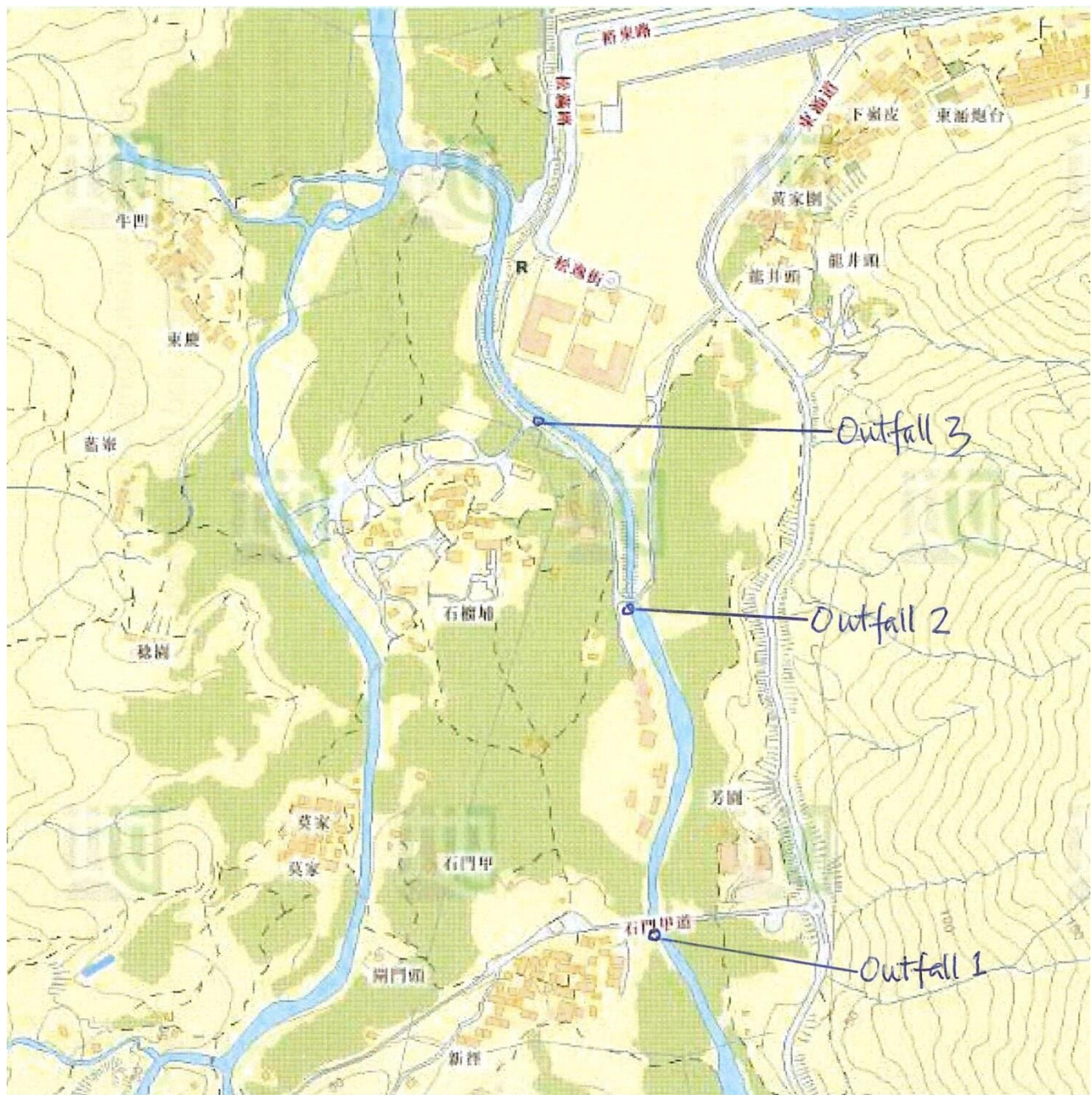
Yours faithfully,



Dr. CHENG Luk-ki

Division Head, Scientific Research and Conservation, GREEN POWER

Map 1 showing the locations of spotted suspected illegal outfalls along Tung Chung River



Map 2 showing the location of suspected illegal outfall 1



Map 3 showing the location of suspected illegal outfall 2



Map 4 showing the locations of suspected illegal outfall 3



Photo 1 showing the suspected illegal outfall 1 (on the left hand side of tree trunk, not shown in this photo) discharging wastewater to Tung Chung River.



Photo 2 showing the suspected illegal outfall 1 polluting Tung Chung River

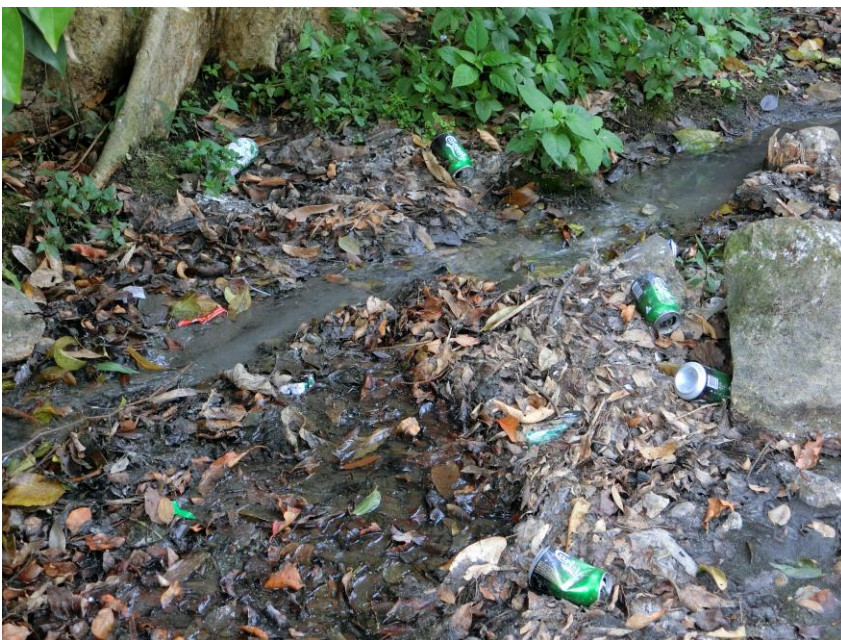


Photo 3 showing the suspected illegal outfall 2 beside the illegal bridge in Shek Lau Po



Photo 4 showing the end of underground pipe connecting to suspected illegal outfall 2 beside the illegal bridge (which is on the left of black private car in the photo) in Shek Lau Po



Photo 5 showing the suspected illegal outfall 3 opposite to the school in Shek Lau Po



Photo 6 showing the end of underground pipe connecting to suspected illegal outfall 3 in Shek Lau Po

